

A laboratory setting with various scientific equipment. In the foreground, a petri dish contains a piece of red, textured cultured meat. To the right, a rack holds several white-capped test tubes. In the background, more petri dishes and test tubes are visible, some containing red or blue liquids. The overall scene is dimly lit, with a blueish tint.

SAVING OUR PLANET:

CULTURED MEAT

Cellular agriculture - the solution to our most urgent issues

14th of December 2020 - Science Congress - Chrissi M., Nina D, Elif C.

STRUCTURE

- I. Crisis and importance
- II. What is cultured meat ?
- III. Benefits
- IV. Funding



I. Deforestation

*CRISIS AND
IMPORTANCE*



II. Climate Change



CRISIS AND IMPORTANCE



III. Human Rights Violations



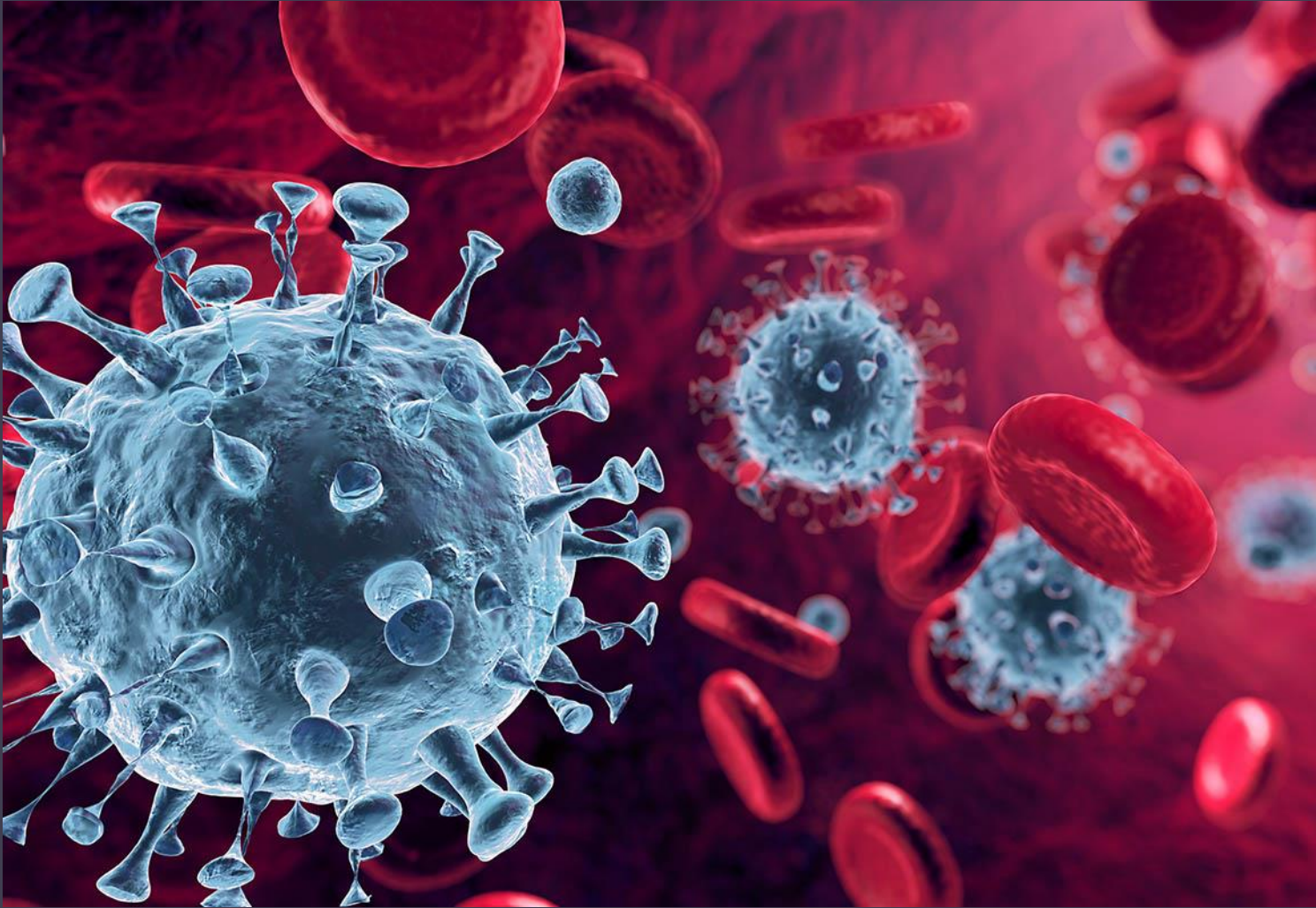
*CRISIS AND
IMPORTANCE*



IV. Higher risk of pandemics



CRISIS AND IMPORTANCE



V. Killing living creatures



*CRISIS AND
IMPORTANCE*



CRISIS AND IMPORTANCE

Issues of current meat industry



Biggest cause for deforestation



Contribution to climate change



Violation of human rights



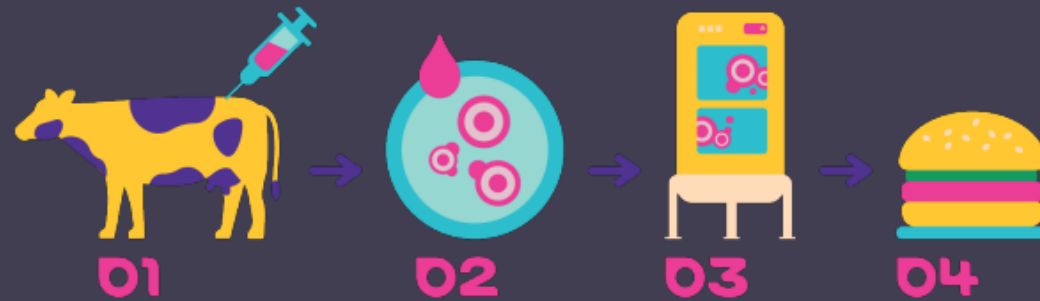
Increasing pandemic risks



Immoral killing of animals

PRODUCTION

WHAT IS CULTURED MEAT?



CURRENT SITUATION

WHAT IS CULTURED MEAT?

- extreme increase in lab-meat startups since 2016
e.g.: Mosa Meats, Eat Just
- attracted record venture-capital funding this year

*"It's not a question whether this is **feasible**, it's a question of **how long** it will take us to go from a pilot setting, where we're at, to a commercial scale."*

-Ido Savir, CEO of SuperMeat



BENEFITS



health benefits



no animal suffering



eco-friendly

FUNDING



Accessibility: rapidly increasing (3000%)



Effectiveness: solution to biggest issues



Efficiency: one tissue -> limitless burgers



Realisability: already existing



Sustanibility: most sustainable option



We must invest in our future

FUNDING

– a future that is not based on animal cruelty, violating other`s human rights, risking our health, destroying nature and contributing to climate change.

We must invest in our future.

FUNDING



For this, we have to fund and support Cultured Meat.

SOURCES

<https://ucsdnews.ucsd.edu/feature/deforestation-drives-disease-climate-change-and-its-happening-at-a-rapid-rate>

<https://projekt-enera.de/blog/wie-beeinflusst-fleischkonsum-den-klimawandel/#:~:text=Bei%20einem%20Kilogramm%20Schweine%2D%20oder,60%20Kilogramm%20Fleisch%20pro%20Jahr.&text=Wenn%20oder%20durchschnittliche%20Deutsche%20einen,Tonnen%20CO2%20pro%20Jahr%20einsparen.>

https://www.nwzonline.de/leserbriefe/lage-in-der-fleischindustrie-ist-nicht-neu_a_50,8,3849353260.html

<https://www.youtube.com/watch?v=jnMOuGDM4JU>

<https://www.labiotech.eu/medical/lab-grown-meat-market-2020/>

[https://www.merckgroup.com/content/dam/web/corporate/images/research/global/science-space/envisioning-](https://www.merckgroup.com/content/dam/web/corporate/images/research/global/science-space/envisioning-tomorrow/content/191210_MKG_ET_CH1_CleanMeat_Infografik_final_.png/_jcr_content/renditions/Mkgaa768x432)

[tomorrow/content/191210_MKG_ET_CH1_CleanMeat_Infografik_final_.png/_jcr_content/renditions/Mkgaa768x432](https://www.merckgroup.com/content/dam/web/corporate/images/research/global/science-space/envisioning-tomorrow/content/191210_MKG_ET_CH1_CleanMeat_Infografik_final_.png/_jcr_content/renditions/Mkgaa768x432)

<https://culturedbeef.org/>

<https://www.forbes.com/sites/susanlow/2020/06/01/are-you-ready-to-eat-lab-meat/>